



**EFFETTO CLASSICO METALLIZZATO**



**ARTECO' 7 Col. 506 A1**



L50 Col. 300



L50 Col. 301

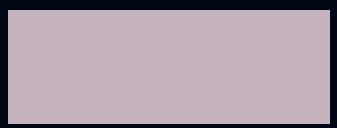
**EFFETTO FLOREALE METALLIZZATO**



**ARTECO' 7 Col. 504 A1 + P40 COL. 12F**



L50 Col. 302



L50 Col. 303

**EFFETTO FLOREALE METALLIZZATO**



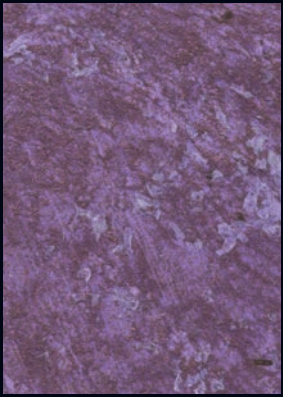
**ARTECO' 7 Col. 505 A1 + P40 COL. 18F**



L50 Col. 304

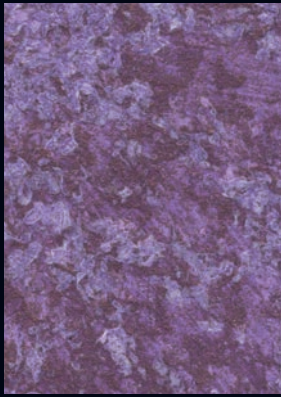


L50 Col. 305



A1

500



B1



A1

503



B1

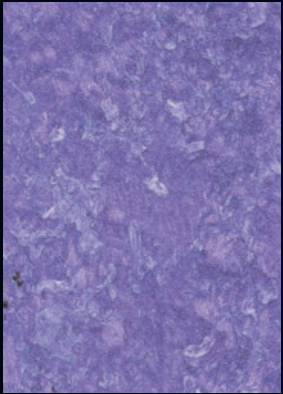


A1

506

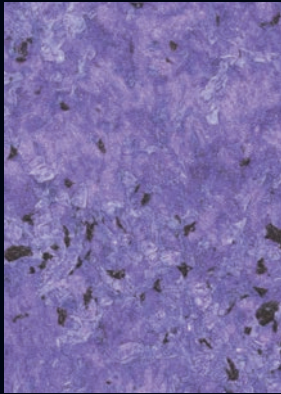


B1



A1

501

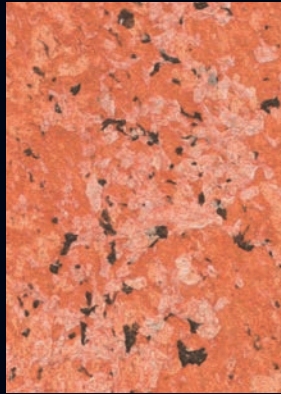


B1

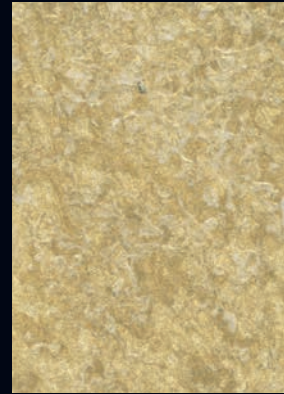


A1

504

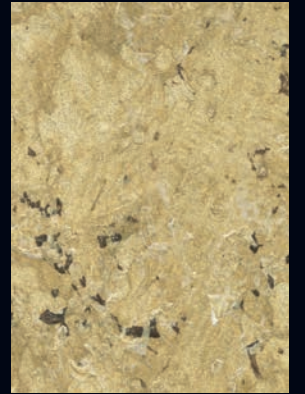


B1

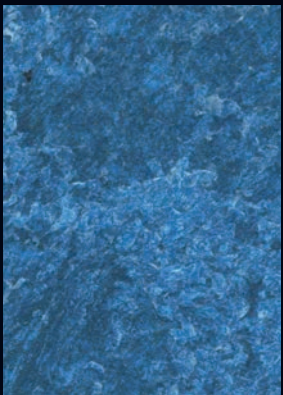


A1

507

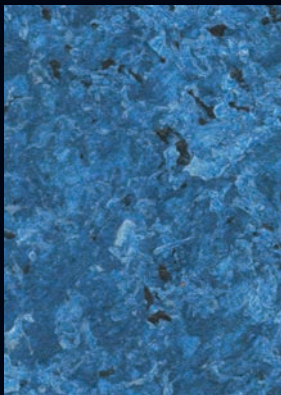


B1



A1

502



B1

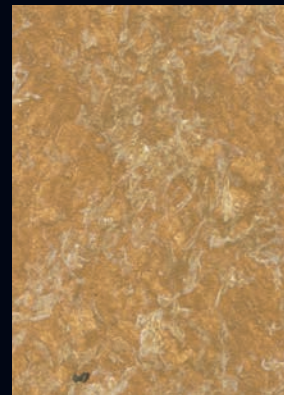


A1

505



B1

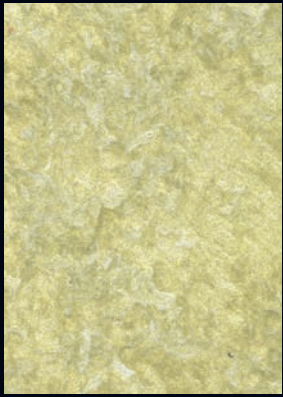


A1

508



B1

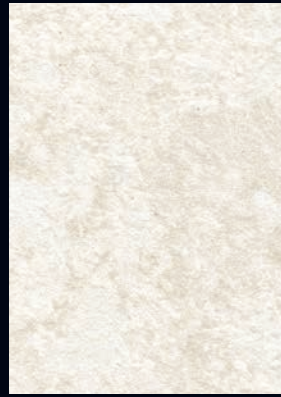


A1

509



B1

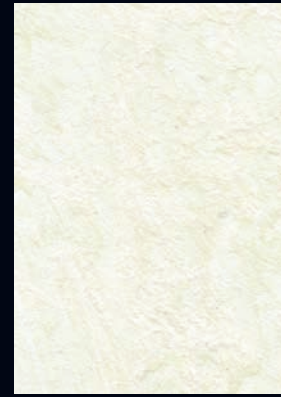


A1

512



B1

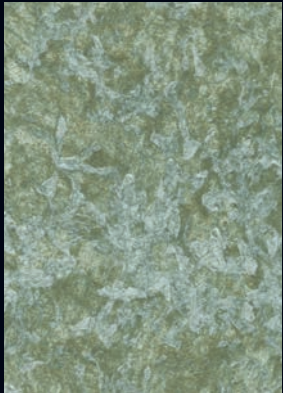


A1

515

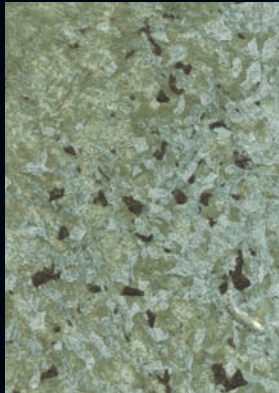


B1



A1

510



B1

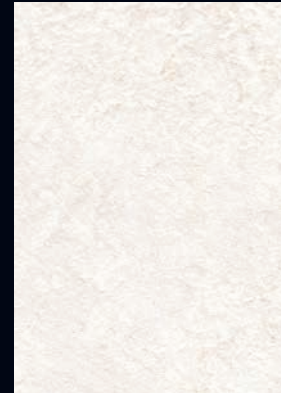


A1

513



B1

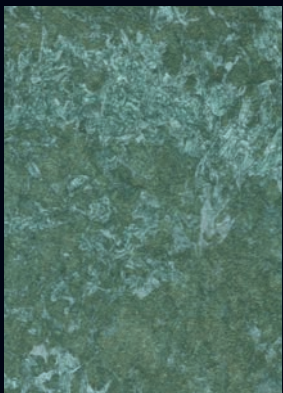


A1

516

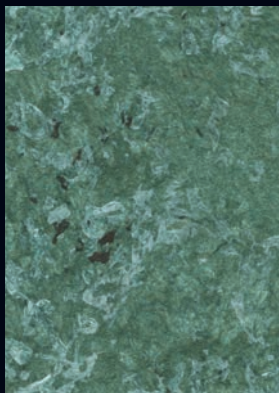


B1



A1

511



B1

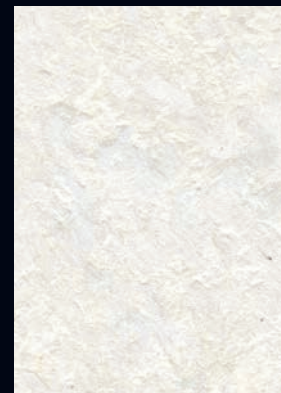


A1

514



B1



A1

517

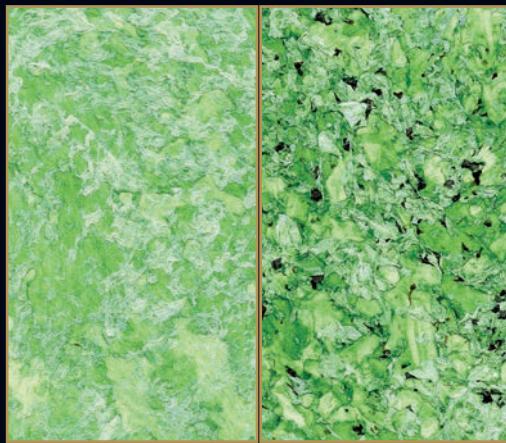


B1

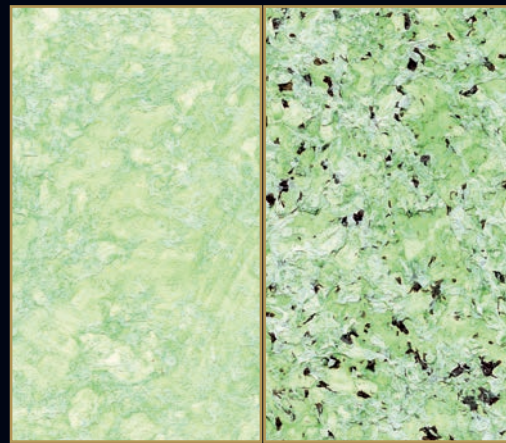




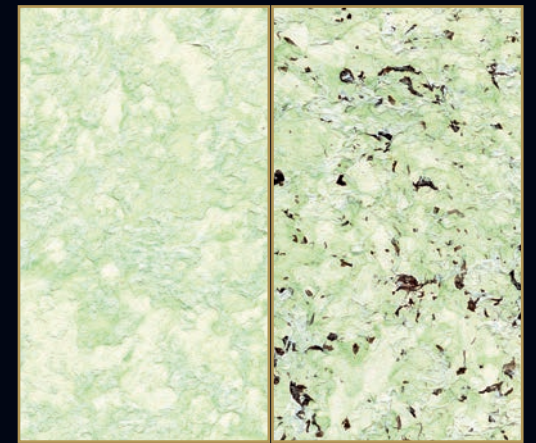
A1 459 B1



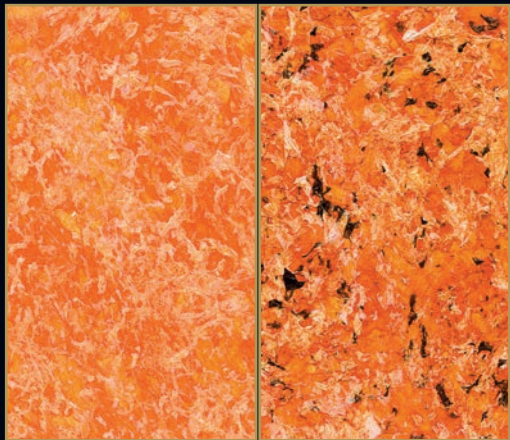
A2 459 B2



A3 459 B3



A4 459 B4



A1 458 B1



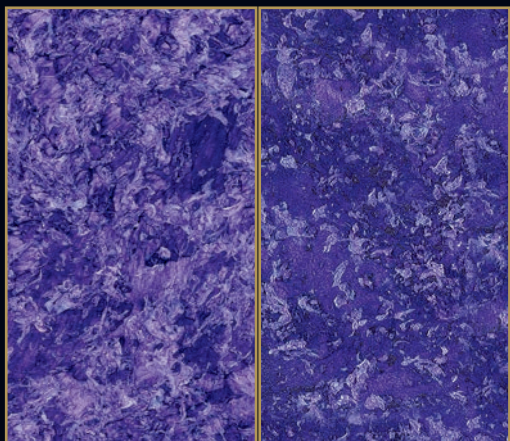
A2 458 B2



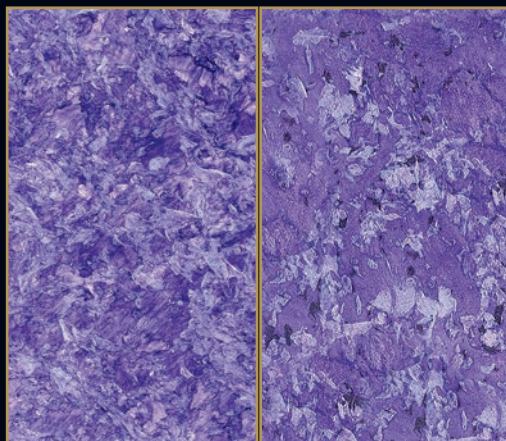
A3 458 B3



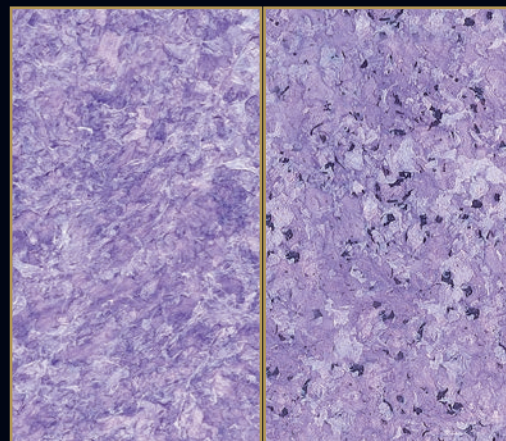
A4 458 B4



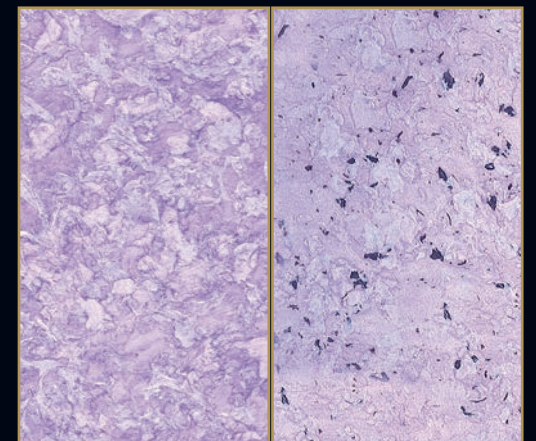
A1 429 B1



A2 429 B2

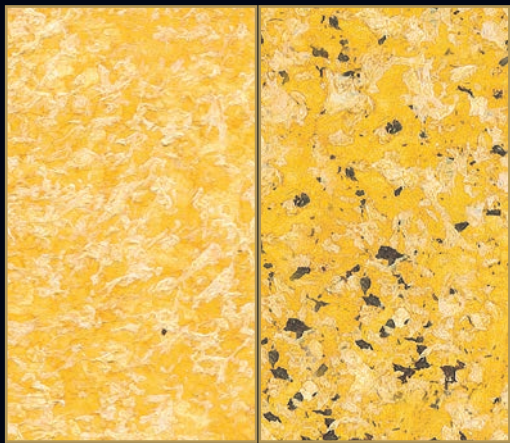


A3 429 B3

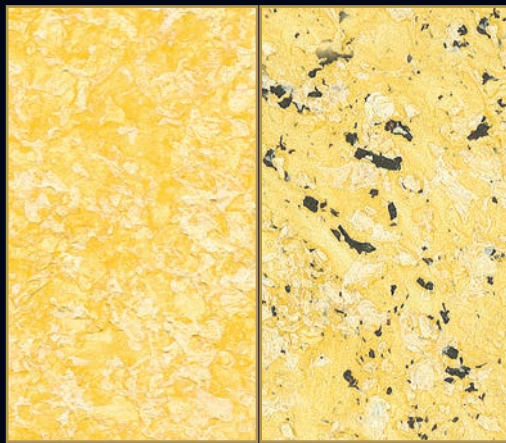


A4 429 B4

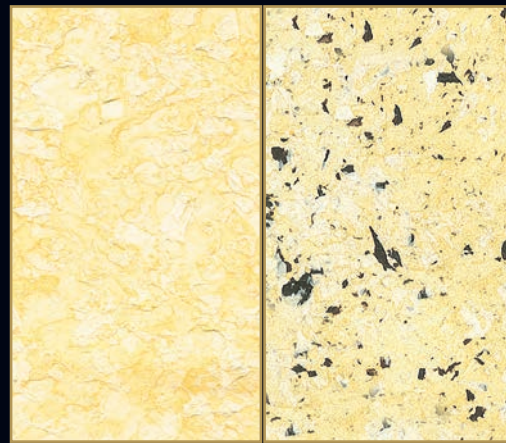




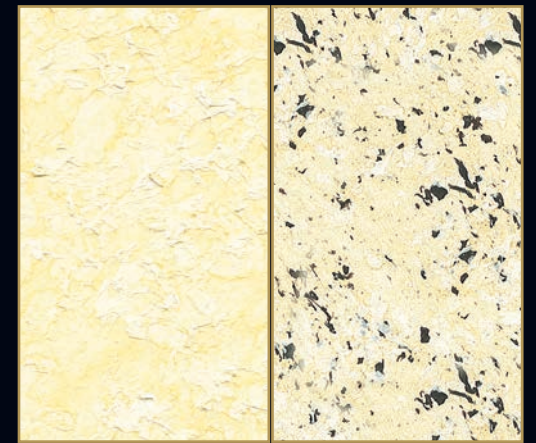
A1 432 B1



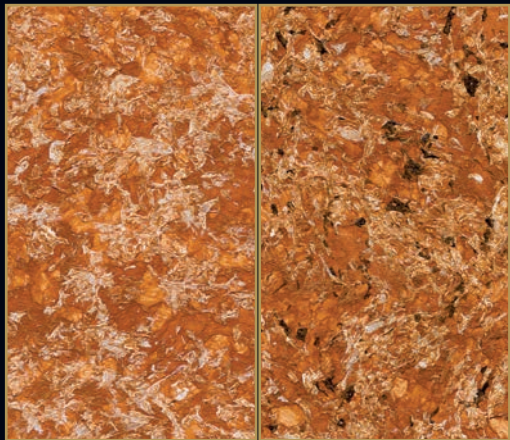
A2 432 B2



A3 432 B3



A4 432 B4



A1 430 B1



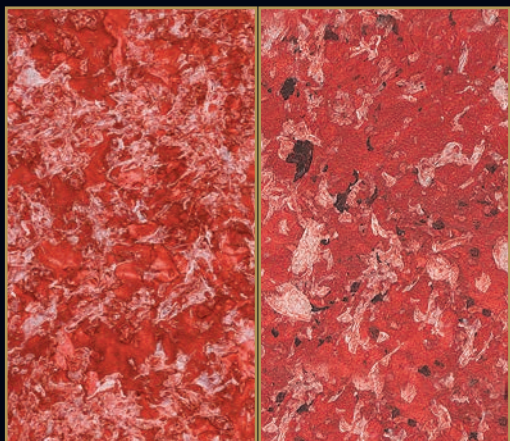
A2 430 B2



A3 430 B3



A4 430 B4



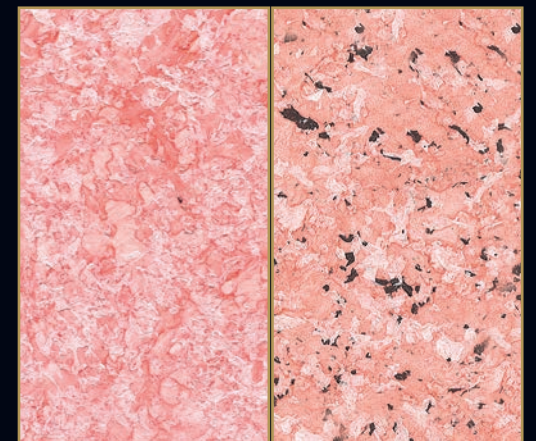
A1 440 B1



A2 440 B2



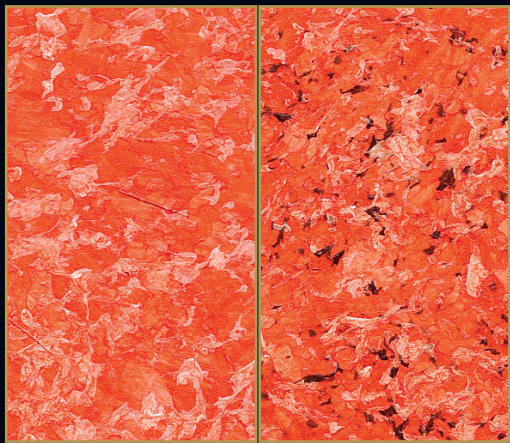
A3 440 B3



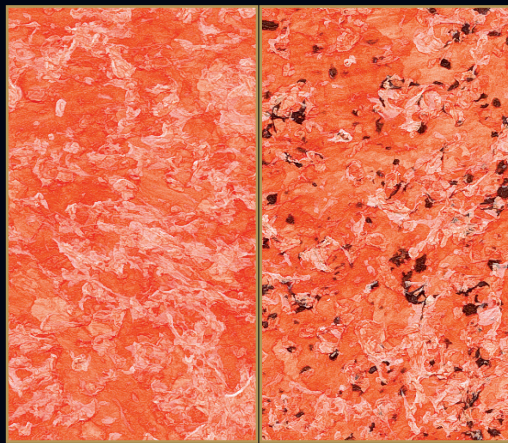
A4 440 B4



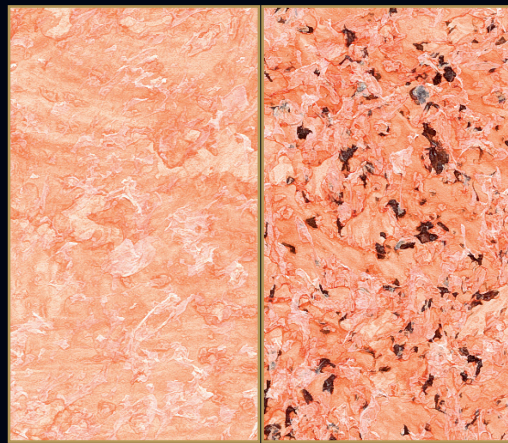




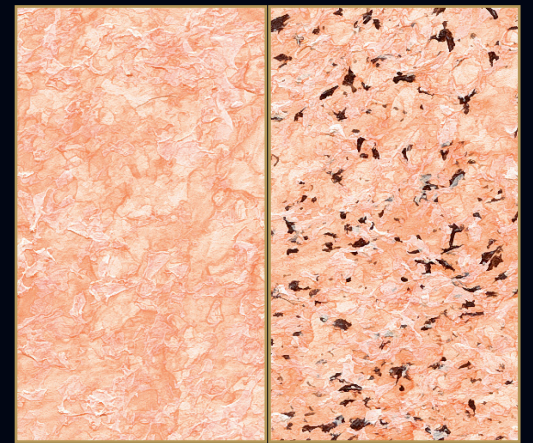
A1 452 B1



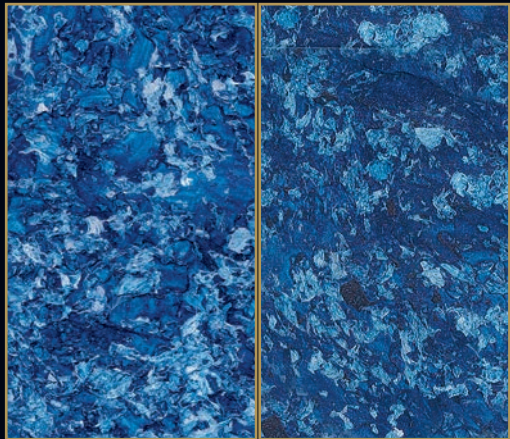
A2 452 B2



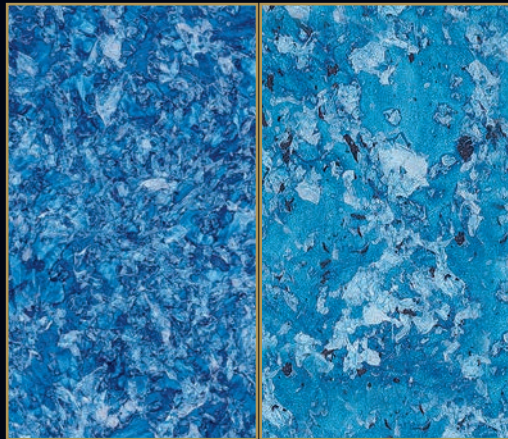
A3 452 B3



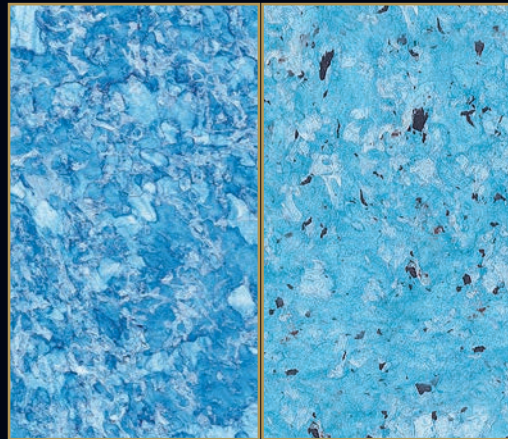
A4 452 B4



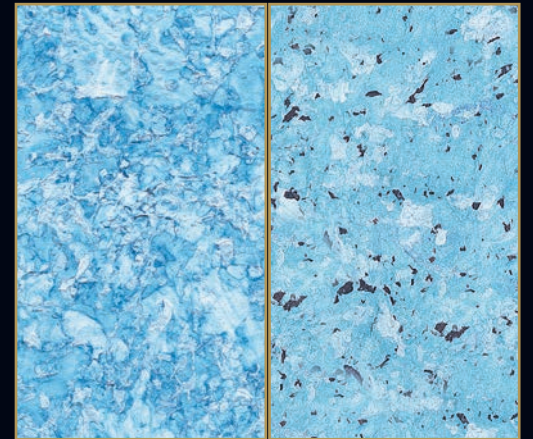
A1 446 B1



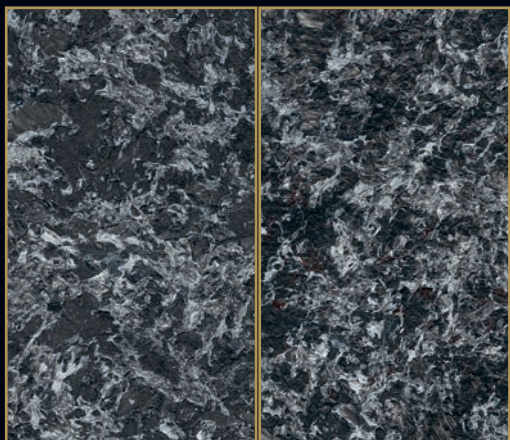
A2 446 B2



A3 446 B3



A4 446 B4



A1 448 B1



A2 448 B2

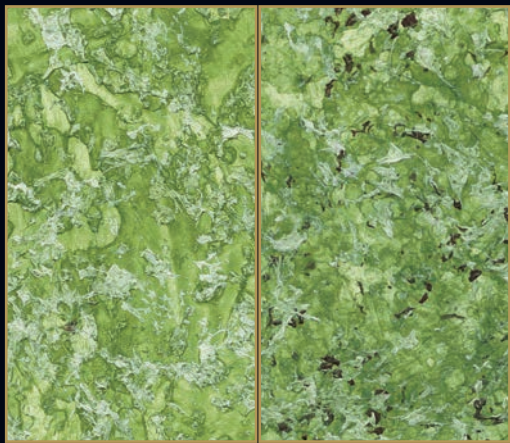


A3 448 B3

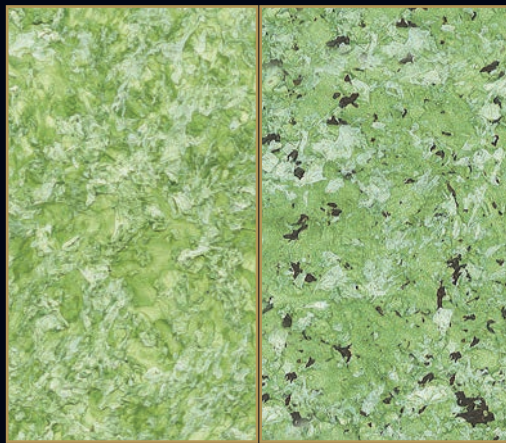


A4 448 B4

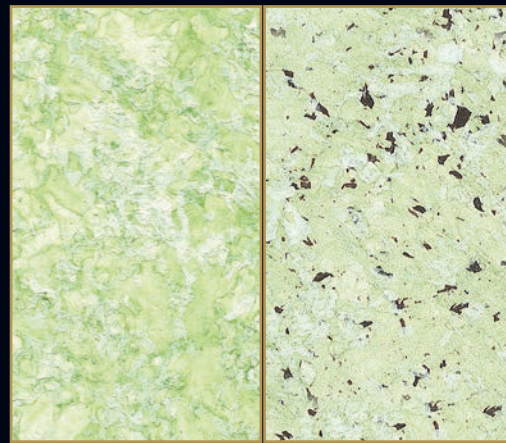




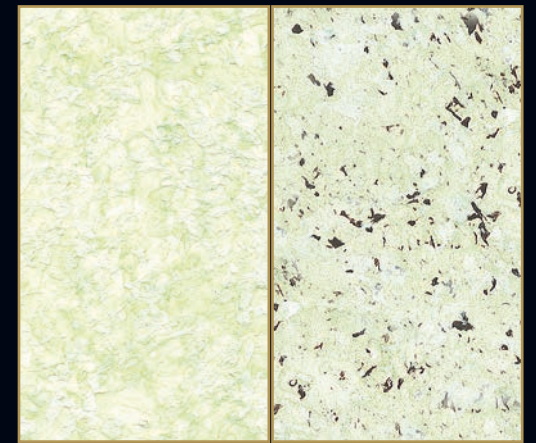
A1 444 B1



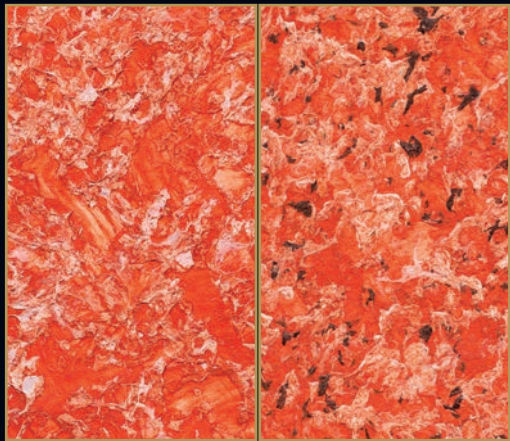
A2 444 B2



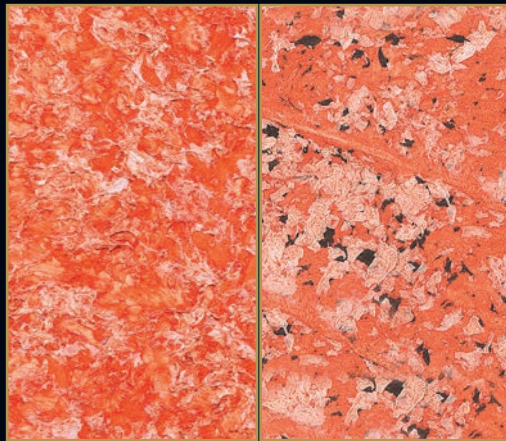
A3 444 B3



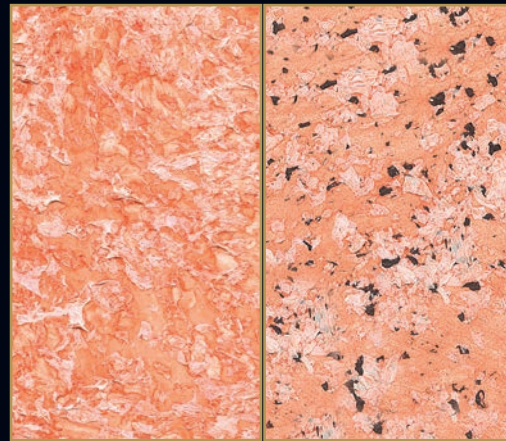
A4 444 B4



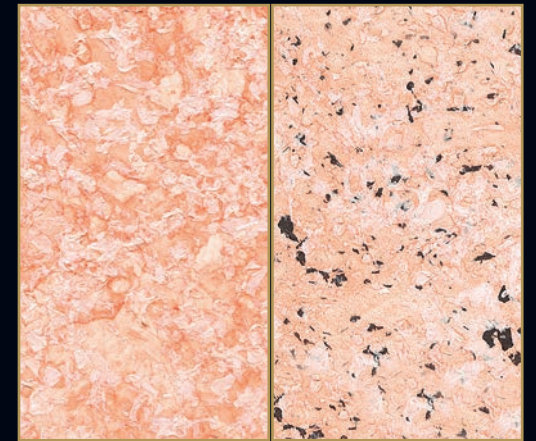
A1 441 B1



A2 441 B2



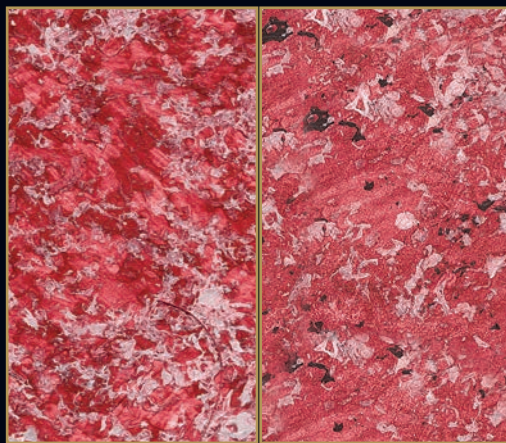
A3 441 B3



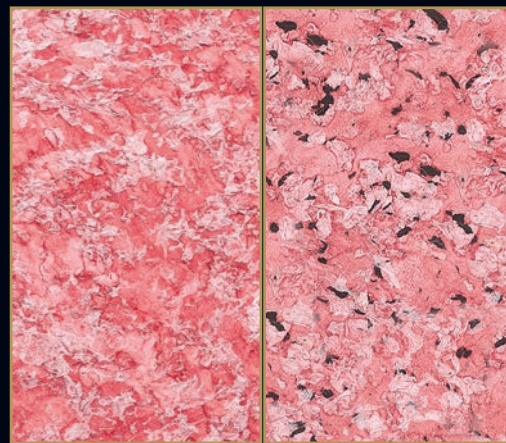
A4 441 B4



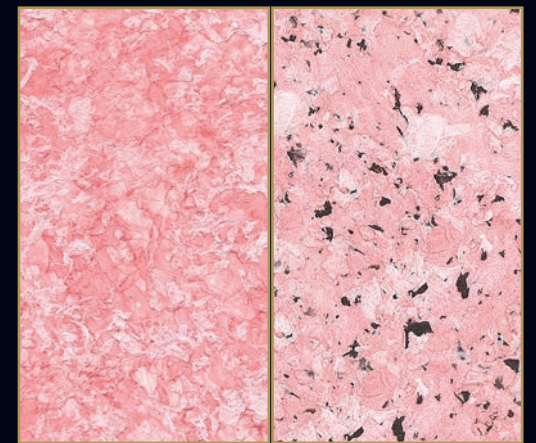
A1 439 B1



A2 439 B2

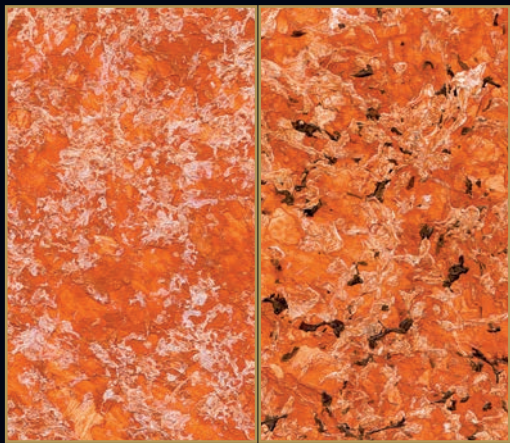


A3 439 B3

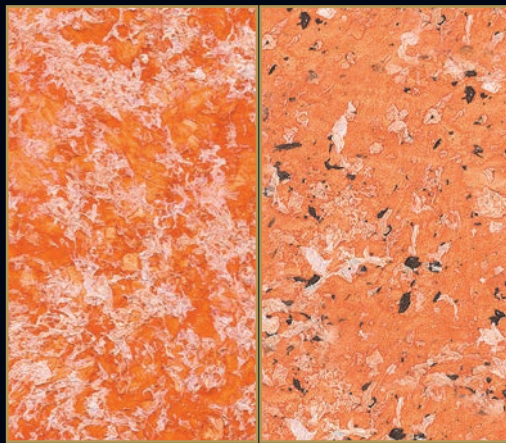


A4 439 B4

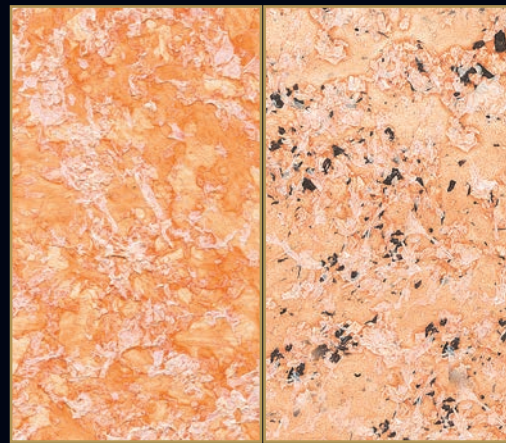




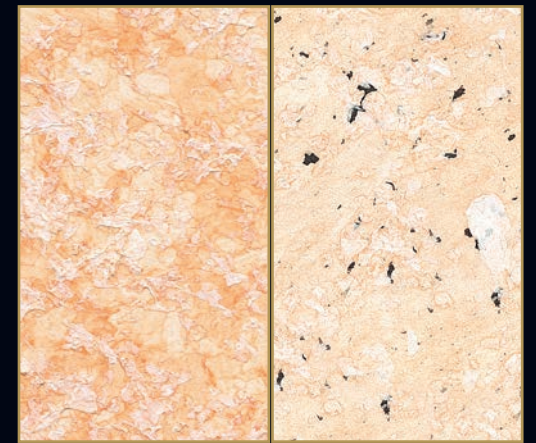
A1 438 B1



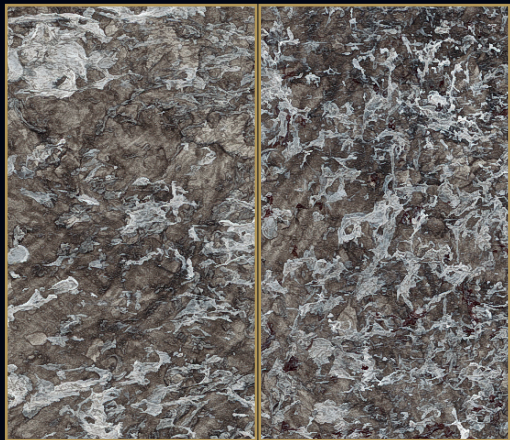
A2 438 B2



A3 438 B3



A4 438 B4



A1 449 B1



A2 449 B2



A3 449 B3



A4 449 B4



A1 450 B1



A2 450 B2

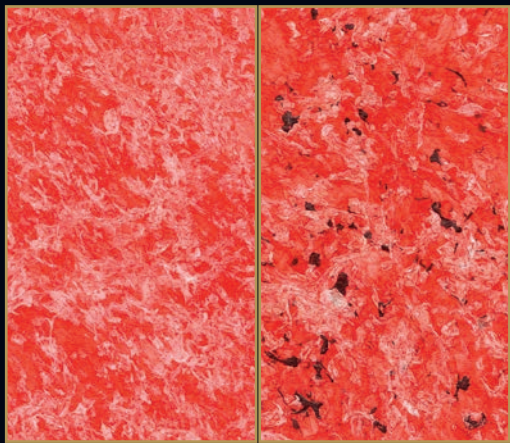


A3 450 B3

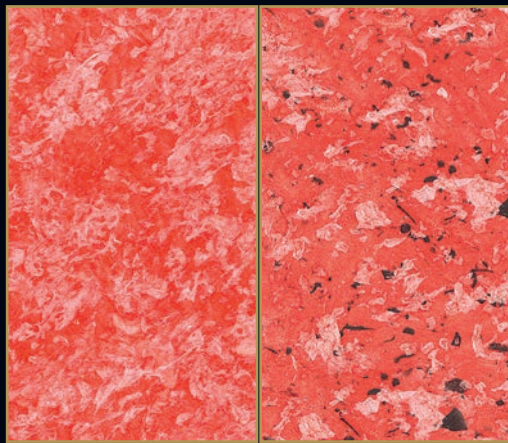


A4 450 B4

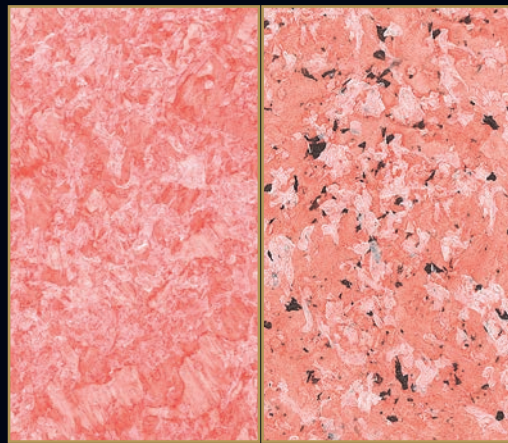




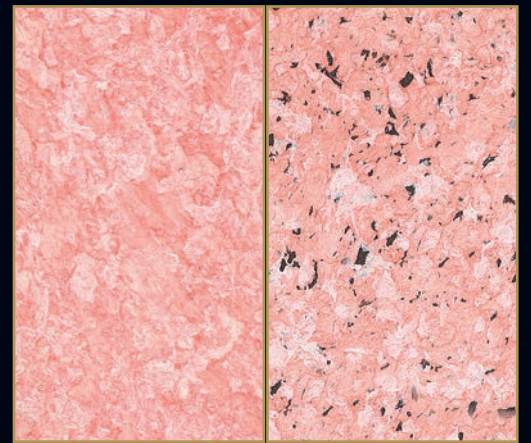
A1 454 B1



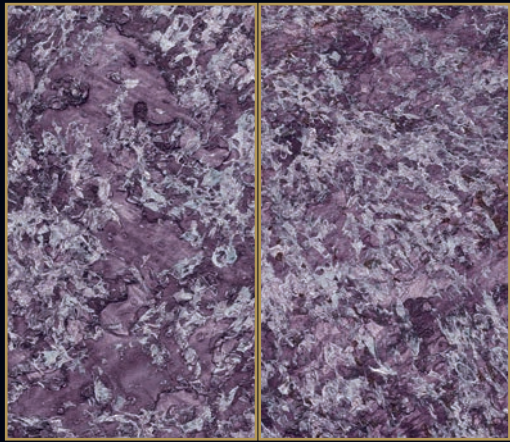
A2 454 B2



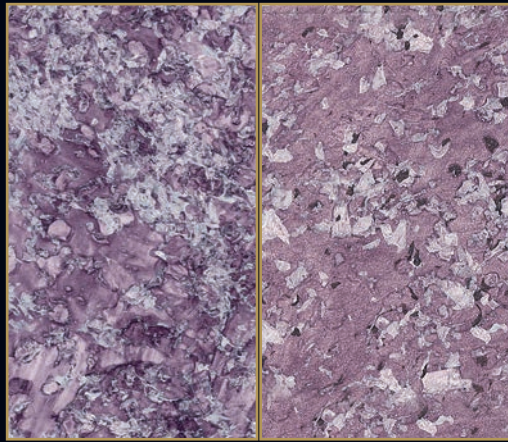
A3 454 B3



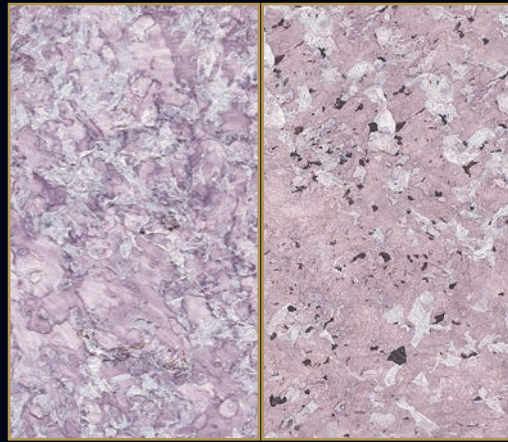
A4 454 B4



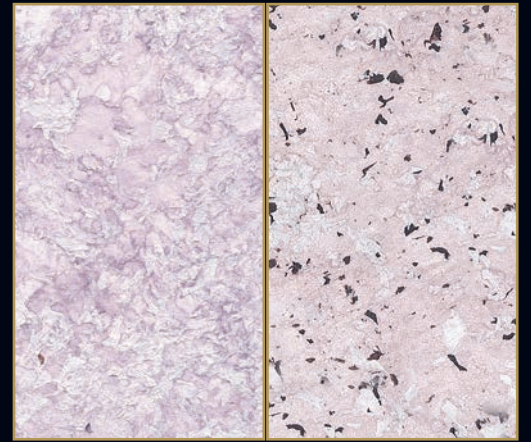
A1 445 B1



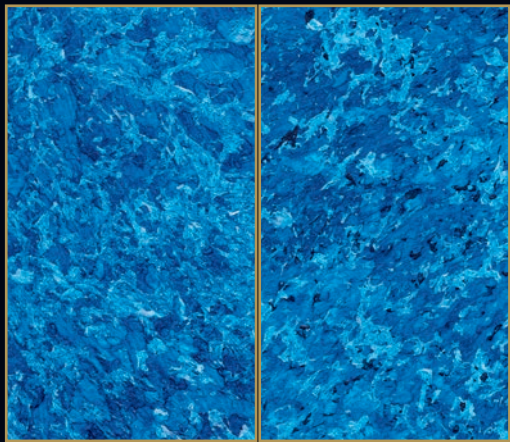
A2 445 B2



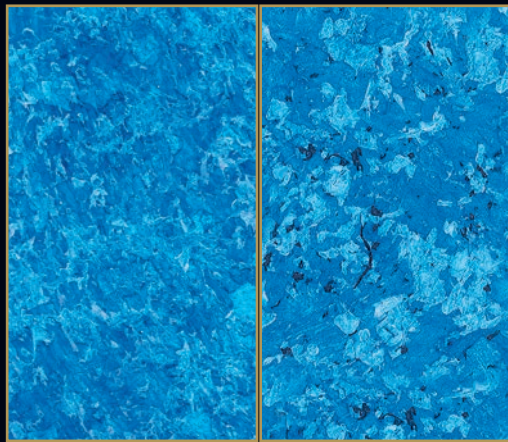
A3 445 B3



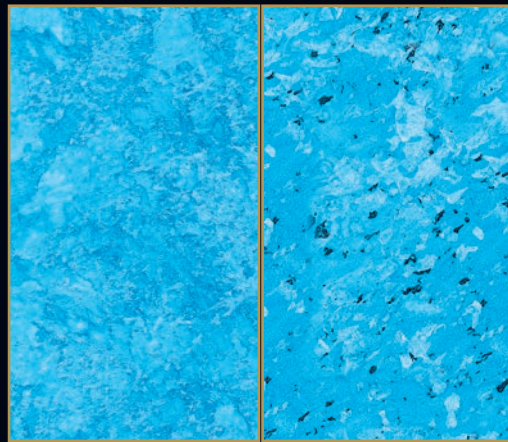
A4 445 B4



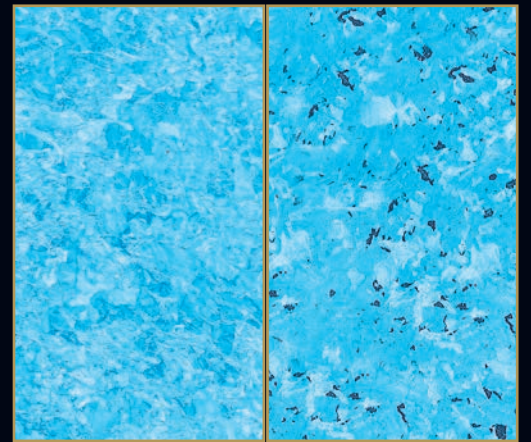
A1 428 B1



A2 428 B2



A3 428 B3



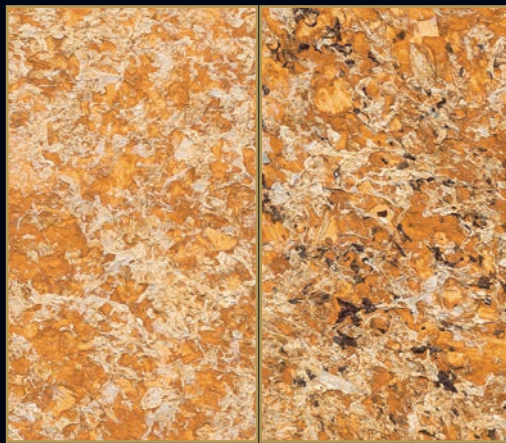
A4 428 B4







A1 435 B1



A2 435 B2



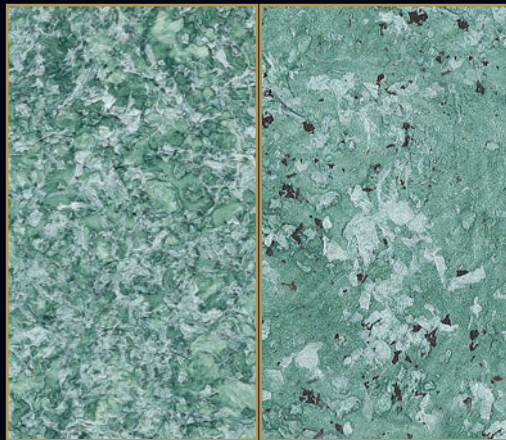
A3 435 B3



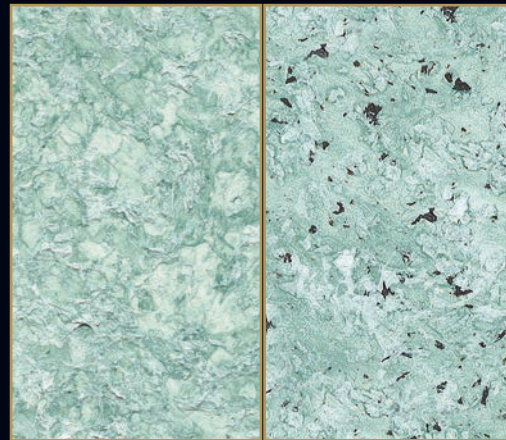
A4 435 B4



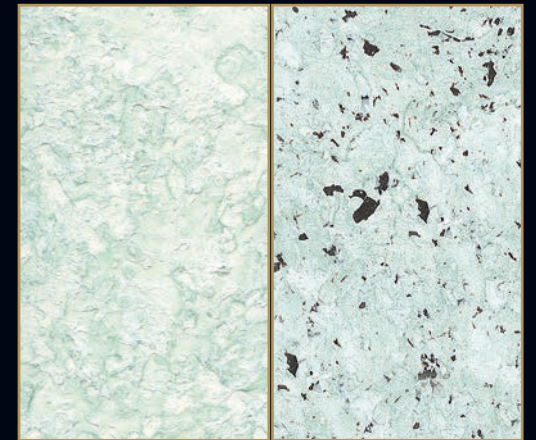
A1 442 B1



A2 442 B2



A3 442 B3



A4 442 B4



A1 425 B1



A2 425 B2

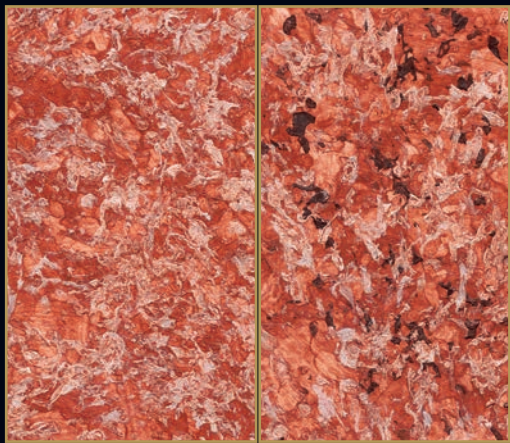


A3 425 B3

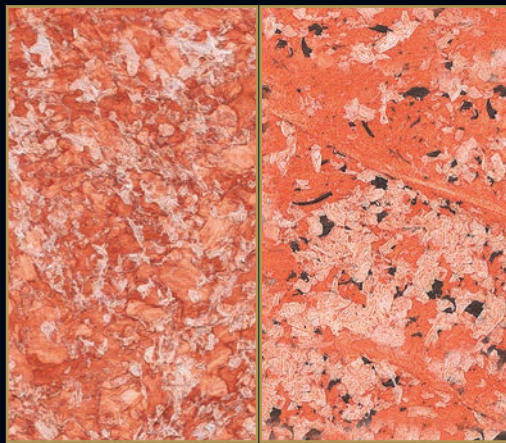


A4 425 B4

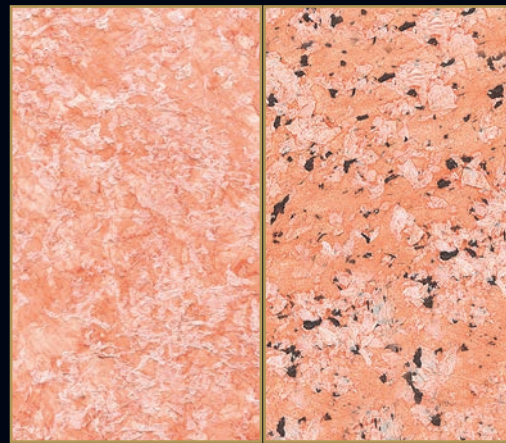




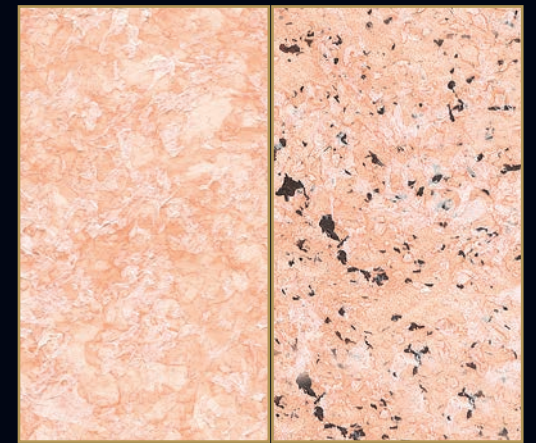
A1 437 B1



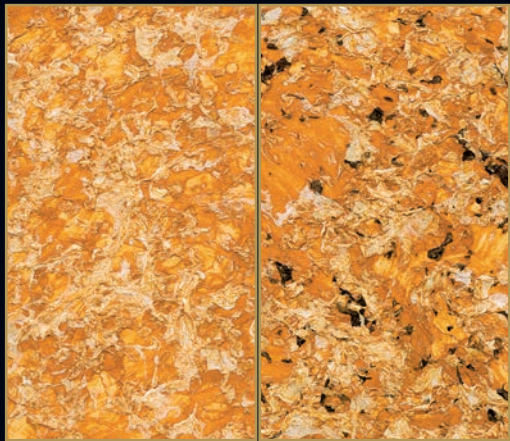
A2 437 B2



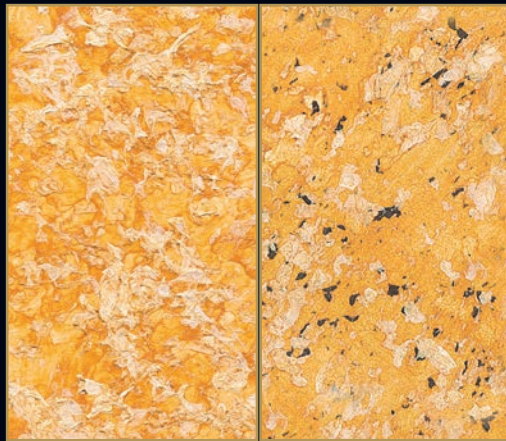
A3 437 B3



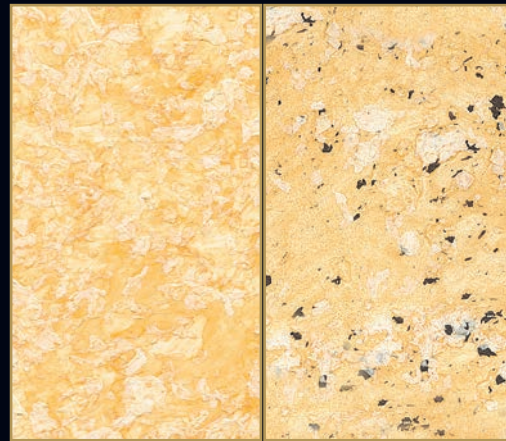
A4 437 B4



A1 431 B1



A2 431 B2



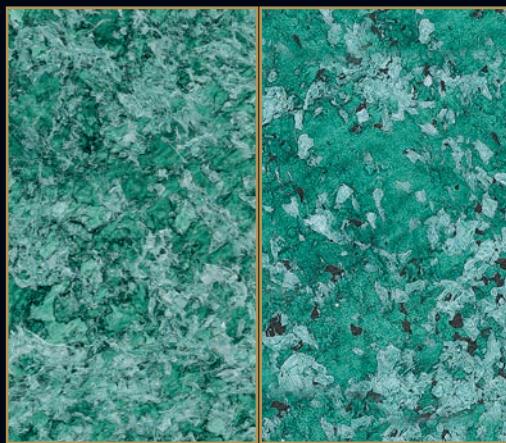
A3 431 B3



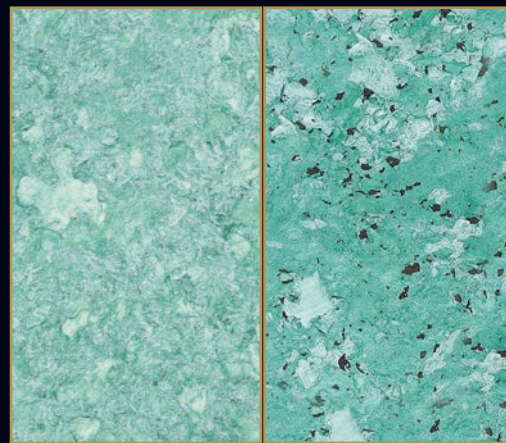
A4 431 B4



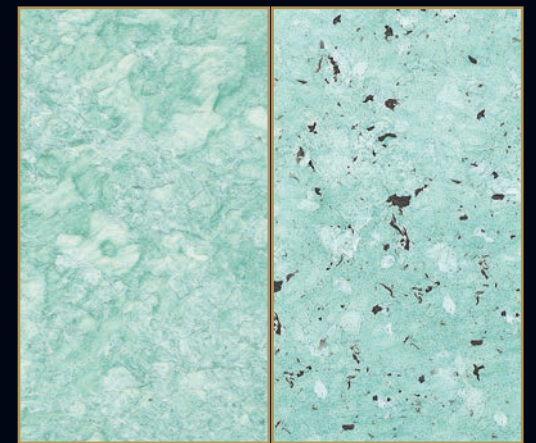
A1 453 B1



A2 453 B2



A3 453 B3



A4 453 B4

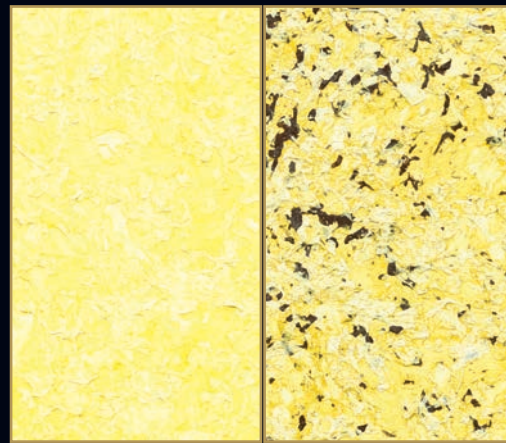




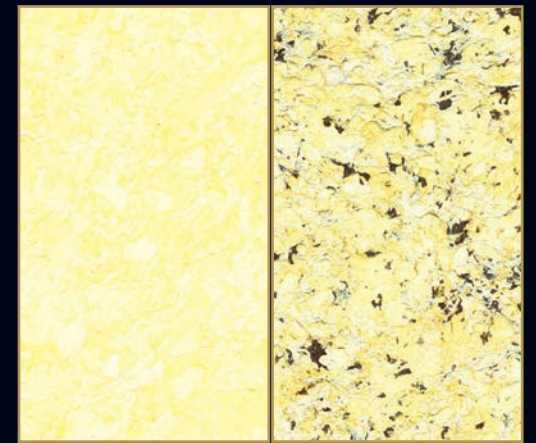
A1 460 B1



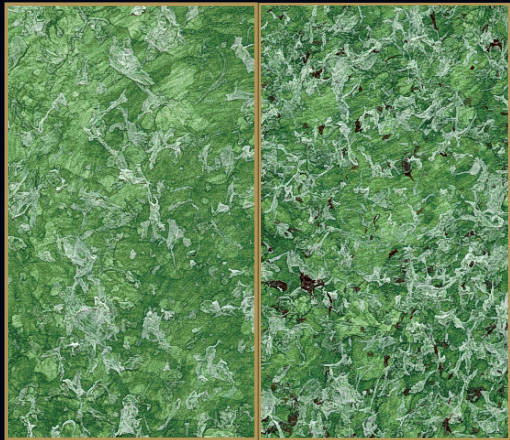
A2 460 B2



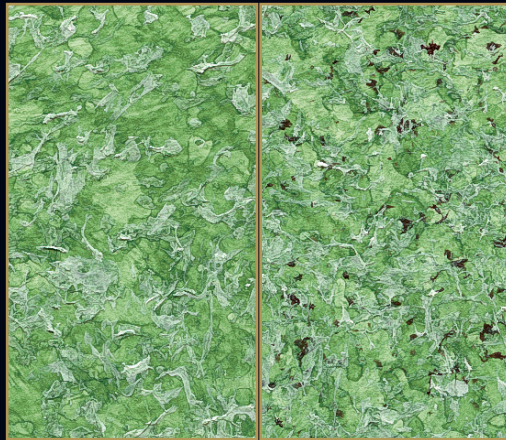
A3 460 B3



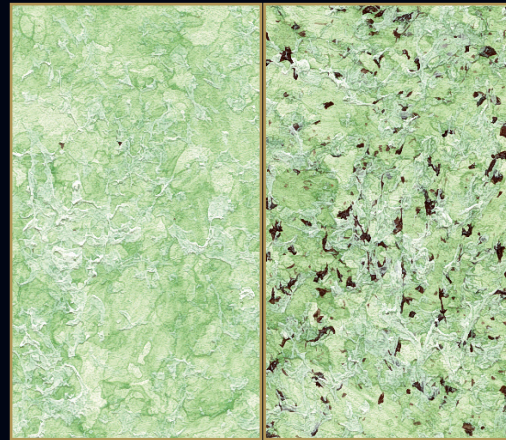
A4 460 B4



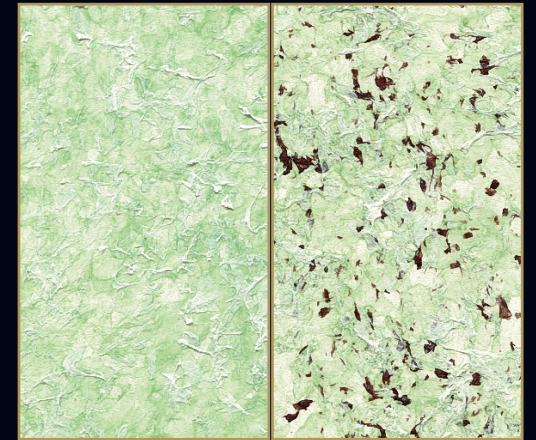
A1 443 B1



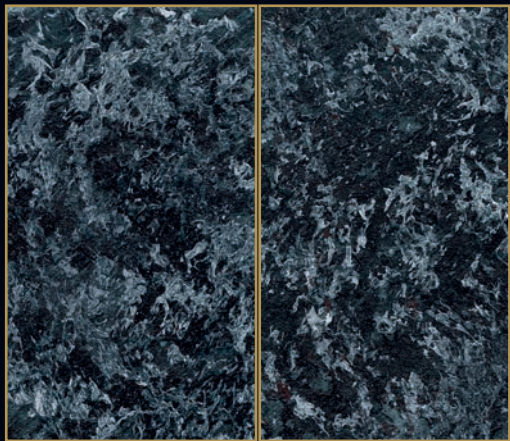
A2 443 B2



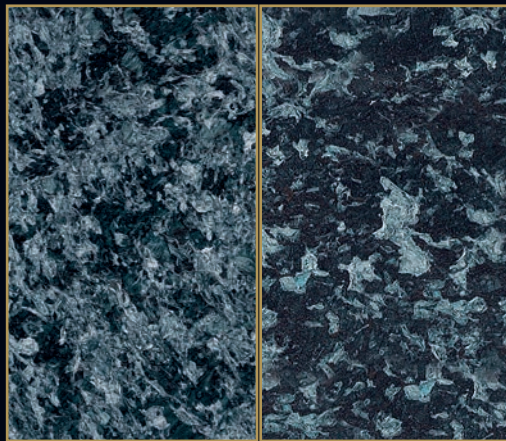
A3 443 B3



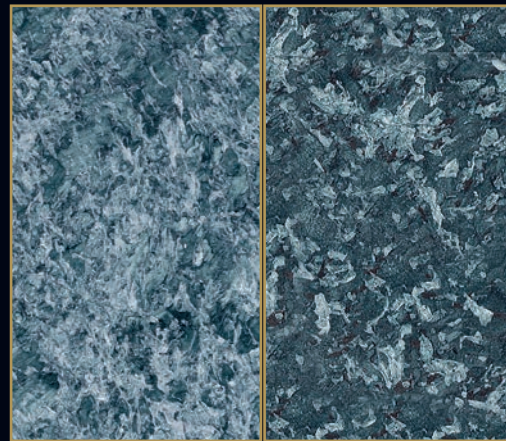
A4 443 B4



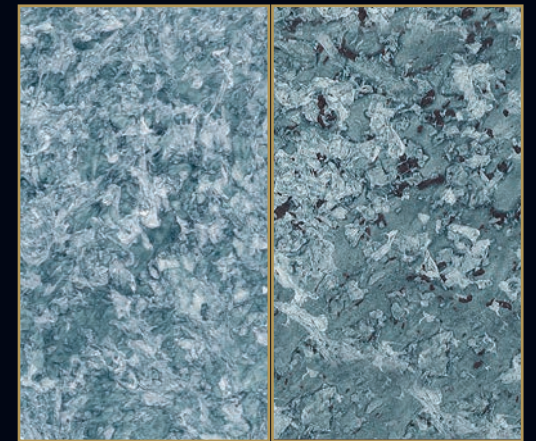
A1 451 B1



A2 451 B2



A3 451 B3



A4 451 B4



<b>XXX A1:</b>	ARTECO' 7 (LT. 1) ARTECO' 7 (LT. 2,5) ARTECO' 7 (LT. 5)	+ COLORI' Col. XXX (ML. 16) + COLORI' Col. XXX (ML. 40) + COLORI' Col. XXX (ML. 80)	
<b>XXX B1:</b>	ARTECO' 7 (LT. 1) ARTECO' 7 (LT. 2,5) ARTECO' 7 (LT. 5)	+ COLORI' Col. XXX (ML. 16) + COLORI' Col. XXX (ML. 40) + COLORI' Col. XXX (ML. 80)	+ P40 Col. 11F (LT. 0,112 = Gr. 114) + P40 Col. 11F (LT. 0,280) + P40 Col. 11F (2 X LT. 0,280)
<b>XXX A2:</b>	ARTECO' 7 (LT. 1) ARTECO' 7 (LT. 2,5) ARTECO' 7 (LT. 5)	+ COLORI' Col. XXX (ML. 8) + COLORI' Col. XXX (ML. 20) + COLORI' Col. XXX (ML. 40)	
<b>XXX B2:</b>	ARTECO' 7 (LT. 1) ARTECO' 7 (LT. 2,5) ARTECO' 7 (LT. 5)	+ COLORI' Col. XXX (ML. 8) + COLORI' Col. XXX (ML. 20) + COLORI' Col. XXX (ML. 40)	+ P40 Col. 11F (LT. 0,112 = Gr. 114) + P40 Col. 11F (LT. 0,280) + P40 Col. 11F (2 X LT. 0,280)
<b>XXX A3:</b>	ARTECO' 7 (LT. 1) ARTECO' 7 (LT. 2,5) ARTECO' 7 (LT. 5)	+ COLORI' Col. XXX (ML. 2) + COLORI' Col. XXX (ML. 5) + COLORI' Col. XXX (ML. 10)	
<b>XXX B3:</b>	ARTECO' 7 (LT. 1) ARTECO' 7 (LT. 2,5) ARTECO' 7 (LT. 5)	+ COLORI' Col. XXX (ML. 2) + COLORI' Col. XXX (ML. 5) + COLORI' Col. XXX (ML. 10)	+ P40 Col. 11F (LT. 0,112 = Gr. 114) + P40 Col. 11F (LT. 0,280) + P40 Col. 11F (2 X LT. 0,280)
<b>XXX A4:</b>	ARTECO' 7 (LT. 2,5) ARTECO' 7 (LT. 5)	+ COLORI' Col. XXX (ML. 2) + COLORI' Col. XXX (ML. 4)	
<b>XXX B4:</b>	ARTECO' 7 (LT. 2,5) ARTECO' 7 (LT. 5)	+ COLORI' Col. XXX (ML. 2) + COLORI' Col. XXX (ML. 4)	+ P40 Col. 11F (LT. 0,280) + P40 Col. 11F (2 X LT. 0,280)

- 1) IL PROSPETTO FORMULATIVO SOPRARIPORTATO E' VALIDO PER I SEGUENTI COLORI':**  
**2) THE ABOVE FORMULATION TABLE IS APPLICABLE FOR THE FOLLOWING COLOURS:**  
**3) LE TABLEAU DE FORMULATION REPRODUIT CI-DESSUS EST VALABLE POUR LES COLORI' SUIVANTS:**  
**4) EL PROSPECTO DE LA FÓRMULA ARRIBA INDICADA ES VÁLIDO PARA LOS SIGUIENTES COLORES:**  
**5) DIE OBEN ANGEFÜHRTE ÜBERSICHT MIT DEN PRODUKTFORMELN GILT FÜR FOLGENDE FARBEN:**  
**6) GORE NAVEDENA TABELA KOLICINA JE VAZECA ZA SLIJEDECE TONERE COLORI'**  
**7) ПРИВЕДЕННАЯ ВЫШЕ ИНФОРМАЦИЯ О СОСТАВЕ ОТНОСИТСЯ К СЛЕДУЮЩИМ ТИПАМ COLORI'**  
**8) Ο ΠΑΡΑΠΑΝΩ ΚΑΤΑΛΟΓΟΣ ΙΣΧΥΕΙ ΓΙΑ ΤΑ ΑΚΟΛΟΥΘΑ ΠΡΟΪΟΝΤΑ COLORI':**  
**9) YUKARIDA AKTARILAN FORMÜLASYON TABLOSU AŞAĞIDAKİ RENKLER İÇİN GEÇERLİDİR:**  
**10) قوائم الألوان المذكورة أعلاه صالحة لتطبيق الألوان التالية:**  
**11) 该段文字上述，仅这些指示颜色膏配比的色泽为有效系列:**

425 - 428 - 429 - 430 - 431 - 432 - 435 - 437 - 438 - 439 - 440 - 441 - 442 - 443 - 444 - 445 - 446 - 448 - 449 - 450 - 451 - 452 - 453 - 454 - 458 - 459 - 460

**L** E' una pittura all'acqua per interno molto versatile e di grande impatto estetico. Con semplici ed essenziali gesti applicativi l'ARTECO' 7 rende la superficie intrisa di pittura come in una preziosa tela in cui il colore è movimento, bellezza, luce, armonia ed emozione. Gli effetti decorativi ottenibili sono molteplici e variano dal classico, al floreale fino ad ottenere il più ricercato effetto metallizzato. Ogni realizzazione quindi contribuisce a creare un ambiente originale ed armonico in cui predominano il cromatismo ed il gusto personale.

L'ARTECO' 7 è un prodotto di elevata qualità in quanto traspirante, lavabile e sopravviviabile con qualsiasi pittura all'acqua. **CARATTERISTICHE:** Per ottenere i colori e gli Effetti del catalogo occorre mescolare accuratamente l'ARTECO' 7 con l'esatta quantità di pasta colorante denominata COLORI'. In alternativa si può colorare con il Sistema Tintometrico VALCLONE. Per avere poi le sfumature Metallizzate è necessario aggiungere il prodotto L50 da LT. 0,100 o da LT. 0,500 fornito in 6 tonalità differenti. Per variare il colore delle particelle dell'ARTECO' 7 va aggiunto il prodotto P40 da LT. 0,280 disponibile in 10 colorazioni diverse. Gli effetti decorativi ottenibili con l'ARTECO' 7 sono i seguenti: **Effetto Classico:** ARTECO' 7 + COLORI'. **Effetto Classico Metallizzato:** ARTECO' 7 + COLORI' + L50. **Effetto Floreale:** ARTECO' 7 + COLORI' + P40. **Effetto Floreale Metallizzato:** ARTECO' 7 + COLORI' + L50 + P40. Le quantità esatte di prodotto da inserire nell'ARTECO' 7 per ottenere i Colori del catalogo sono riportate nella Tabella a pag. 23 - 24. **APPLICAZIONE:** Qui di seguito riportiamo il procedimento utilizzato per ottenere, con l'ARTECO' 7, l'Effetto Classico Anticato e l'Effetto Venato Marmoreo. **1) ARTECO' 7 Effetto Classico Anticato:** applicare e lavorare il prodotto gradualmente su una piccola superficie (circa 1 - 2 mq), utilizzando il Pennello PV 76. La tecnica applicativa consiste nello stendere la pittura in tutte le direzioni, alternando le pennellate da destra verso sinistra e viceversa, dal basso verso l'alto e viceversa in modo che il prodotto si uniformi adeguatamente. Dopo circa 5 - 10 minuti a 20°C, ripassare la parte già trattata utilizzando sempre il Pennello PV 76 ma scarico di prodotto, spostando le particelle verso le zone mancanti, con morbide pennellate in superficie. Quando la parte liscia della pittura è asciutta mentre le particelle a rilievo sono ancora bagnate (dopo circa 10 minuti) lisciare leggermente l'ARTECO' 7 con la Spatola di plastica PV 77 alternando ed incrociando le spatolate. **N.B:** Su supporti molto ruvidi, buccianti, ecc. applicare l'ARTECO' 7 solo con il Pennello PV 76, senza utilizzare la Spatola di plastica PV 77, si otterrà ugualmente un Effetto Anticato. **2) ARTECO' 7 Effetto Venato Marmoreo:** applicare il prodotto trasversalmente o verticalmente o anche orizzontalmente, utilizzando il pennello PV 76. La tecnica applicativa, molto importante per ottenere l'Effetto Venato, consiste nel mantenere la direzione iniziale con piccole pennellate della lunghezza di circa 10 - 15 cm. Dopo circa 15 - 20 minuti a 20°C dalla stesura del prodotto, quando la parte liscia della pittura è asciutta, mentre le particelle a rilievo sono ancora bagnate lisciare la superficie con la Spatola di plastica PV 77 esercitando una leggera pressione sulle particelle di prodotto in rilievo, schiacciandole con la spatola in posizione obliqua e seguendo la stessa direzione delle pennellate sopra descritte.

**NORME DI IMPIEGO:** **3) Muri Vecchi.** Eliminare le vecchie pitture mal ancorate o sfarinanti e lavare con saponi adeguati. Stuccare poi la superficie, dove necessario, con stucco idoneo. Quando lo stucco si è essiccato, dopo circa 4 ore a 20°C, applicare come fissativo, una mano di PRIMART 600 diluito al 50% con acqua. Dopo circa 4 ore a 20°C applicare una seconda mano di PRIMART 600 diluito al 15 - 20% con acqua. Se invece le superfici non sono sfarinanti, quando lo stucco si è essiccato, applicare una mano di PRIMART 600 diluito al 15 - 20% con acqua. Dopo 4 ore a 20°C, procedere con l'applicazione dell'ARTECO' 7 come descritto al punto 1 o 2.

## EFFETTO CLASSICO ANTICATO



1) Primart 600 o Primer 400



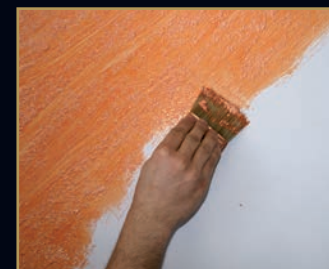
2) Artecò 7



## EFFETTO VENATO MARMOREO



1) Primart 600 o Primer 400



2) Artecò 7



**4) Muri Nuovi.** Stuccare adeguatamente la superficie da trattare, dove necessario, con stucco idoneo. Ad essiccazione dello stucco, dopo circa 4 ore a 20°C, carteggiare, quindi applicare una mano di PRIMART 600 diluito al 15 - 20% con acqua. Dopo 4 ore a 20°C, proseguire con l'applicazione dell'ARTECO' 7 come riportato al punto 1 o 2. **DATI TECNICI:** **Peso Specifico:** ARTECO' 7 1.020 ± 30 gr/LT. a 20°C; PRIMART 600: 1.600 ± 30 gr/LT. a 20°C. **Diluizione:** l'ARTECO' 7 ed i prodotti L50 e P40 sono pronti all'uso; il PRIMART 600 va diluito al 15 - 20% con acqua. **Resa:** ARTECO' 7 circa LT 1 per 7 - 8 mq; PRIMART 600 circa LT. 1 per 10 - 12 mq per una mano. **Effetto Classico:** LT 1 di ARTECO' 7 + COLORI' = circa 8 - 9 mq; LT 2,5 di ARTECO' 7 + COLORI' = circa 20 - 21 mq; LT 5 di ARTECO' 7 + COLORI' = circa 40 - 42 mq. **Effetto Classico Metallizzato:** LT 1 di ARTECO' 7 + COLORI' + L50 = circa 10 - 11 mq; LT 2,5 di ARTECO' 7 + COLORI' + L50 = circa 25 - 27 mq; LT 5 di ARTECO' 7 + COLORI' + L50 = circa 50 - 54 mq. **Effetto Floreale:** LT 1 di ARTECO' 7 + COLORI' + P40 = circa 9 - 10 mq; LT 2,5 di ARTECO' 7 + COLORI' + P40 = circa 22 - 25 mq; LT 5 di ARTECO' 7 + COLORI' + P40 = circa 44 - 50 mq. **Effetto Floreale Metallizzato:** LT 1 di ARTECO' 7 + COLORI' + L50 + P40 = circa 11 - 12 mq; LT 2,5 di ARTECO' 7 + COLORI' + L50 + P40 = circa 27 - 30 mq; LT 5 di ARTECO' 7 + COLORI' + L50 + P40 = circa 54 - 60 mq. Confezioni: l'ARTECO' 7 è disponibile in confezioni da LT. 1 - LT. 2,5 - LT. 5; il PRIMART 600 è fornito in confezioni da LT. 1 - LT. 2,5 - LT. 5; il prodotto L50 è da LT. 0,100 - LT. 0,500, il prodotto P40 è invece da LT. 0,280; il COLORI' sono in formato da ML. 80 e da ML. 480. **Temperatura per applicazione:** superiore a +5°C e inferiore a +30°C. **Essiccazione:** fuori polvere dopo circa 3 - 4 ore a 20°C. Asciutto dopo 5 - 6 ore a 20°C. Indurisce dopo 24 ore in base alla temperatura dell'ambiente.

**Aspetto del prodotto:** satinato e metallizzato.

**Resistenza:** dopo il completo indurimento, si ottiene una pellicola traspirante con buona resistenza agli urti ed alla normale abrasione. **Lavabilità:** con acqua e comuni detersivi dopo 15 giorni dall'applicazione. Pulizia attrezzi: con acqua e sapone. Conservazione: in latta ben chiusa, anche dopo l'uso, a temperatura superiore a +10°C e inferiore a +30°C. **Stabilità:** 2 anni circa in confezioni ben sigillate e mai aperte. **NORME PARTICOLARI DI SICUREZZA:** Evitare il contatto diretto con la pelle, proteggere gli occhi ed il viso, in caso di contatto, lavare immediatamente ed abbondantemente con acqua e consultare il medico. Le attrezzature non devono essere lavate in corsi d'acqua, scarichi, ecc. **AVVERTENZE PER L'UTILIZZATORE:** Le informazioni fornite, per quanto risultano dalle nostre esperienze, sono esatte ed accurate. Tuttavia non essendo le condizioni d'impiego sotto il nostro controllo, non ci assumiamo alcuna responsabilità per i consigli ed i suggerimenti forniti. Si consiglia di eseguire il ciclo applicativo completo su una piccola parete per verificare la perfetta riuscita dopo di che proseguire con la decorazione controllando costantemente gli effetti decorativi ottenuti. Le tinte possono variare, rispetto al catalogo, dal 20% al 30% come pure tra applicatori diversi e pertanto è consigliato di effettuare una prova in piccolo prima di eseguire il lavoro. Ogni lavoro deve essere iniziato e portato a termine dalla stessa persona. Il fabbricante ed il distributore non si assumono nessuna responsabilità per eventuali diversità tra una partita o in caso di illeggibilità della stessa. Nel caso in cui le suddette siano differenti, onde evitare diversità di colore ad applicazione avvenuta, è necessario mescolare tutto il materiale in un contenitore grande prima di iniziare l'applicazione.

Per ottenere il migliore risultato con l'ARTECO' 7, lavorando in maniera veloce, si consiglia di utilizzare il Pennello PV 76 e la particolare Spatola in plastica PV 77.

**IMPORTANTE:** L'ARTECO' 7 può essere applicato su intonaci a calce purché ben stagionati ed asciutti.



This is a very versatile and visually striking water-based paint for indoor use. With its simple, basic application method, ARTECO' 7 covers the surface with paint, like an exquisite canvas in which colour is movement, beauty, light, harmony and emotion. This product may be used to create many different decorative effects, from classic to floral; even the most sought-after metallic effect can be achieved. Each application therefore helps to create an original and harmonious environment, in which colour and personal taste are the dominant forces. ARTECO' 7 is a high-quality product as it is breathable, washable and may be painted over with any other water-based paint.

**CHARACTERISTICS:** To create the colours and effects displayed in the catalogue, carefully mix the ARTECO' 7 with the exact amount of COLORI' colouring paste required. Alternatively, the VALCLONE paint-mixing system may be used to achieve the desired colour. To obtain the metallic finishes, it will then be necessary to add the product L50 (supplied in a 100 ML or 500 ML pack), which is available in 6 different shades. To vary the colour of the particles in ARTECO' 7, add the product P40 (supplied in a 280 ML pack), available in 11 different colours. The decorative effects that can be achieved using ARTECO' 7 are as follows: **Classic effect:** ARTECO' 7 + COLORI'. **Metallic Classic effect:** ARTECO' 7 + COLORI' + L50. **Floral effect:** ARTECO' 7 + COLORI' + P40. **Metallic Floral effect:** ARTECO' 7 + COLORI' + L50 + P40.

The exact amounts of each product to be added to ARTECO' 7 in order to create the colours displayed in the catalogue are listed in the table on page 23 - 24. **APPLICATION:** The procedures used to create the Classic Antique effect and the Veined Marble effect using ARTECO' 7 are described below.

**1) ARTECO' 7 Classic Antique effect:** apply and work the product gradually over a small surface (about 1 - 2 square metres at a time), using the PV 76 brush. The application technique consists of spreading the paint in all directions, alternating brush-strokes from right to left and vice versa, and from bottom to top and vice versa, so that the paint is suitably even. After approximately 5 - 10 minutes at 20°C, go over the surface which has already been treated, still using the PV 76 brush but not loaded with product, distributing the particles more evenly using soft brush-strokes over the surface. When the smooth areas of paint are dry and the particles standing out from the surface are still wet (after approximately 10 minutes), gently smooth the ARTECO' 7 using the PV 77 plastic spatula, alternating and crossing the spatula movements. **N.B.:** On surfaces which are very rough, pitted etc., apply the ARTECO' 7 using only the PV 76 brush without the PV 77 plastic spatula. This also will result in an Antique effect. **2) ARTECO' 7 Veined Marble effect:** apply the product transversally, vertically or horizontally using the PV 76 brush. The application technique, which is very important for achieving the veined effect, consists of maintaining the original direction using small brush-strokes approximately 10 - 15 cm in length. Approximately 15 - 20 minutes after applying the product at 20°C, when the smooth areas of paint are dry and while the particles standing out from the surface are still wet, smooth the surface with the PV 77 plastic spatula, exerting particular pressure on the protruding product particles, squashing them with the spatula in an oblique position and following the same direction as the brush-strokes described above. **INSTRUCTIONS FOR USE:** **3) Old walls.** Remove old badly-adhering or peeling paint and wash using a suitable soap product. Use a suitable filler to repair the surface where necessary. When the filler is dry, after approximately 4 hours at 20°C, apply a coat of PRIMART 600 diluted 50% with water as a fixative. After approximately 4 hours at 20°C, apply a second coat of PRIMART 600 diluted 15 - 20% with water. If, however, the surfaces are not chalking or peeling, apply a coat of PRIMART 600 diluted 15 - 20% with water once the filler has dried. After 4 hours at 20°C, proceed with the application of ARTECO' 7 as described in point 1 or 2. **4) New walls.** Use a suitable filler to repair the surface where necessary. When the filler is dry, after approximately 4 hours at 20°C, sand the surface then apply a coat of PRIMART 600 diluted 15 - 20% with water. After 4 hours at 20°C, proceed with the application of ARTECO' 7 as described in point 1 or 2.

**TECHNICAL DATA: Specific Weight:** ARTECO' 7 1.020 ± 30 g/litre at 20°C; PRIMART 600: 1.600 ± 30 g/litre at 20°C. **Dilution:** ARTECO' 7, and the products L50 and P40 are ready to use; PRIMART 600 should be diluted 15 - 20% with water. **Coverage:** ARTECO' 7 - approximately 1 litre per 7 - 8 square metres; PRIMART 600 - approximately 1 litre per 10 - 12 square metres.

**Classic effect:** 1 litre of ARTECO' 7 + COLORI' = approx. 8 - 9 square metres; 2,5 litres of ARTECO' 7 + COLORI' = approx. 20 - 21 square metres; 5 litres of ARTECO' 7 + COLORI' = approx. 40 - 42 square metres.

**Metallic Classic effect:** 1 litre of ARTECO' 7 + COLORI' + L50 = approx. 10 - 11 square metres; 2,5 litres of ARTECO' 7 + COLORI' + L50 = approx. 25 - 27 square metres; 5 litres of ARTECO' 7 + COLORI' + L50 = approx. 50 - 54 square metres. **Floral effect:** 1 litre of ARTECO' 7 + COLORI' + L50 + P40 = approx. 9 - 10 square metres; 2,5 litres of ARTECO' 7 + COLORI' + L50 + P40 = approx. 22 - 25 square metres; 5 litres of ARTECO' 7 + COLORI' + L50 + P40 = approx. 44 - 50 square metres.

**Metallic Floral effect:** 1 litre of ARTECO' 7 + COLORI' + L50 + P40 = approx. 11 - 12 square metres; 2,5 litres of ARTECO' 7 + COLORI' + L50 + P40 = approx. 27 - 30 square metres; 5 litres of ARTECO' 7 + COLORI' + L50 + P40 = approx. 54 - 60 square metres. **Packaging:** ARTECO' 7 is available in 1-Litre, 2,5-Litre or 5-Litre packs; PRIMART 600 is supplied in 1-Litre, 2,5-Litre or 5-Litre packs; the product L50 comes in 100 ML - 500 ML packs while the product P40 comes in 280 ML packs; COLORI' is supplied in 80 ML and 480 ML packs. **Application temperature:** between +5°C and +30°C. **Drying:** in a non-dusty environment for approximately 3 - 4 hours at 20°C. Dry after 5 - 6 hours at 20°C. Hardens after 24 hours, depending on the temperature of the room. **Appearance of the product:** satin-finish and metallic.

**Strength:** when hardening is complete, a breathable film develops which offers good resistance to knocks and normal abrasion. **Washability:** washable with water and ordinary detergents 15 days after application. **Equipment cleaning:** soap and water. **Storage:** make sure the tin is tightly closed, even after use, and stored at a temperature no lower than +10°C and no higher than +30°C. **Stability:** approximately 2 years, if well sealed and never opened. **SAFETY INSTRUCTIONS:** Avoid direct contact with the skin. Protect eyes and face. In the event of contact, rinse immediately and thoroughly with water and consult a doctor. Equipment must not be washed in watercourses, drains etc. **USER ADVICE:** The information provided here is, to the best of our knowledge, correct and accurate. However, considering that the conditions in which the products are used are not under our control, we will not be held liable for any recommendations or advice given. We recommend that the complete application cycle is tested on a small wall first in order to ensure it is a success, after which the rest of the decoration procedure may be continued (check the decorative effects regularly as you proceed). Shades may vary compared with the images shown in the catalogue, by between 20% and 30% depending on product application; it is therefore advisable to carry out a small test before commencing the work. Each job should be started and completed by the same person. The manufacturer and the distributor do not assume any responsibility for possible variations between batches, or in cases where the batch number is illegible. In the event that these batches are different, it will be necessary to mix all the material in a large container before beginning the application process, in order to avoid differences in colour once the product has been applied.

To achieve the best results using ARTECO' 7 and to get the job done quickly, we recommend using the PV 76 brush and the special PV 77 spatula.

**IMPORTANT: ARTECO' 7 can be applied to lime plaster but well seasoned and dry.**



Peinture à l'eau pour intérieur particulièrement polyvalente, à fort impact esthétique. En quelques gestes simples et essentiels, l'application d'ARTECO' 7 rend la surface imprégnée de peinture telle une toile précieuse où la couleur est mouvement, beauté, lumière, harmonie et émotion. Les effets décoratifs possibles sont multiples, ils vont de l'effet classique à l'effet fleuri sans oublier un effet métallisé des plus raffinés. Chaque réalisation contribue à créer un cadre original et harmonieux où le chromatisme et le goût personnel prévalent. ARTECO' 7 est un produit de toute première qualité, transparent, résistant au lavage et pouvant être repeint avec tout type de peinture à l'eau. **CARACTÉRISTIQUES:** Pour obtenir les couleurs et les effets du catalogue, il faut mélanger soigneusement ARTECO' 7 avec la quantité exacte de pâte colorante COLORI' nécessaire. Il est aussi possible de réaliser la décoration à l'aide du système colorimétrique VALCLONE. Pour obtenir les nuances métallisées, il faut ajouter le produit L50 en pot de 0,100 l ou 0,500 l existant en 6 teintes au choix. Pour modifier la couleur des particules d'ARTECO' 7 il faut ajouter le produit P40 en flacon de 0,280 l disponible en 11 teintes au choix. ARTECO' 7 permet d'obtenir les effets décoratifs suivants: **Effet Classique:** ARTECO' 7 + COLORI'. **Effet Classique Métallisé:** ARTECO' 7 + COLORI' + L50. **Effet Fleuri:** ARTECO' 7 + COLORI' + P40. **Effet Fleuri Métallisé:** ARTECO' 7 + COLORI' + L50 + P40. Les quantités exactes de produit à ajouter à ARTECO' 7 pour obtenir les couleurs figurant au catalogue sont indiquées dans le tableau page 23 - 24. **APPLICATION:** Voici la marche à suivre pour obtenir un effet classique vieilli et un effet marbré avec ARTECO' 7. **1) ARTECO' 7 Effet Classique Vieilli:** Appliquez et travaillez le produit progressivement sur une petite surface (environ 1 à 2 m<sup>2</sup>) à l'aide du pinceau PV 76. La technique consiste à appliquer la peinture dans toutes les directions en alternant les coups de pinceau de droite à gauche et de gauche à droite, de haut en bas et de bas en haut, de sorte que la peinture soit uniforme. Après 5 à 10 minutes à 20° C, repasser sur la partie déjà traitée. Peindre légèrement la surface en utilisant toujours le pinceau PV 76 sans le charger de peinture en déplaçant les particules vers les zones qui en sont dépourvues. Lorsque la partie lisse de la peinture est sèche alors que les particules en relief sont encore humides (au bout de 10 minutes environ), lissez légèrement ARTECO' 7 à l'aide de la spatule en plastique PV 77 en alternant et en croisant les mouvements. **N.B.:** Sur les supports rugueux et effrités, appliquez ARTECO' 7 uniquement au pinceau PV76. N'utilisez pas la spatule en plastique PV77. Vous obtiendrez également un effet vieilli. **2) ARTECO' 7 Effet Marbré:** appliquez le produit de manière transversale, verticale ou horizontale, à l'aide du pinceau PV 76. La technique est indispensable afin d'obtenir un effet marbré : maintenez l'orientation du pinceau et peignez par petites touches sur une longueur de 10 à 15 cm. Après environ 15 à 20 minutes à 20° C, lorsque la partie lisse de la peinture est sèche alors que les particules en relief sont encore humides, lissez la surface à l'aide de la spatule en plastique PV 77. Appuyez légèrement sur les particules en relief pour les écraser et les étirer en oblique dans le sens des coups de pinceau décrits ci-dessus. **MODE D'EMPLOI:** **3) Murs anciens.** Éliminer les vieilles peintures qui s'effritent et laver avec du savon approprié. Mastiquer bien les surfaces aux endroits voulus avec un enduit approprié. Après séchage de l'enduit, au bout d'environ 4 heures à 20°C, appliquer une couche de PRIMART 600 dilué à 50% avec de l'eau. Au bout d'environ 4 heures à 20°C, appliquer une deuxième couche de PRIMART 600 dilué à 15 - 20% avec de l'eau. Si, par contre, les surfaces ne s'effritent pas, appliquez une couche de PRIMART 600 dilué à 15 - 20% avec de l'eau lorsque l'enduit est sec. Au bout de 4 heures à 20°C, appliquez ARTECO' 7 comme décrit au point 1 ou 2. **4) Murs Neufs.** Mastiquer bien les surfaces aux endroits voulus avec un enduit approprié. Après séchage de l'enduit, au bout d'environ 4 heures à 20°C, poncer puis appliquer une couche de PRIMART 600 dilué à 15 - 20% avec de l'eau. Au bout de 4 heures à 20° C, appliquez ARTECO' 7 comme décrit au point 1 ou 2. **DONNÉES TECHNIQUES: Poids spécifique:** ARTECO' 7 1.020 ± 30 g/l à 20°C; PRIMART 600: 1.600 ± 30 g/l à 20°C. **Dilution:** ARTECO' 7, et les produits L50 et P40 sont prêts à l'emploi; PRIMART 600 doit être dilué à l'eau à raison de 15 - 20%. **Rendement:** ARTECO' 7 environ 1 l pour 7 - 8 m<sup>2</sup>; PRIMART 600 environ 1 l pour 10 - 12 m<sup>2</sup>. **Effet Classique:** 1 l d'ARTECO' 7 + COLORI' = environ 8 - 9 m<sup>2</sup>; 2,5 l d'ARTECO' 7 + COLORI' = environ 20 - 21 m<sup>2</sup>; 5 l d'ARTECO' 7 + COLORI' = environ 40 - 42 m<sup>2</sup>; **Effet Classique métallisé:** 1 l d'ARTECO' 7 + COLORI' + L50 = environ 10 - 11 m<sup>2</sup>; 2,5 l d'ARTECO' 7 + COLORI' + L50 = environ 25 - 27 m<sup>2</sup>; 5 l d'ARTECO' 7 + COLORI' + L50 = environ 50 - 54 m<sup>2</sup>; **Effet Fleuri:** 1 l d'ARTECO' 7 + COLORI' + P40 = environ 9 - 10 m<sup>2</sup>; 2,5 l d'ARTECO' 7 + COLORI' + P40 = environ 22 - 25 m<sup>2</sup>; 5 l d'ARTECO' 7 + COLORI' + P40 = environ 44 - 50 m<sup>2</sup>; **Effet Fleuri Métallisé:** 1 l d'ARTECO' 7 + COLORI' + L50 + P40 = environ 11 - 12 m<sup>2</sup>; 2,5 l d'ARTECO' 7 + COLORI' + L50 + P40 = environ 27 - 30 m<sup>2</sup>; 5 l d'ARTECO' 7 + COLORI' + L50 + P40 = environ 54 - 60 m<sup>2</sup>. **Conditionnement:** ARTECO' 7 est conditionné en pots de 1 l - 2,5 l - 5 l; PRIMART 600 est conditionné en pots de 1 l - 2,5 l - 5 l; le produit L50 est disponible en pots de 0,100 - 0,500 l; le produit P40 est disponible en pots de 0,280 l; COLORI' est disponible en 80 et 480 ml. **Température d'application:** supérieure à +5°C et inférieure à +30°C. **Séchage:** hors poussière au bout de 3 - 4 heures environ à 20°C. Sec au bout de 5 - 6 heures à 20°C. Il durcit au bout de 24 heures selon la température ambiante. Aspect du produit: satiné et métallisé. **Résistance:** après durcissement complet, on obtient la formation d'une pellicule transparente présentant une bonne résistance aux chocs et à l'abrasion. **Nettoyage:** à l'eau et avec des détergents courants 15 jours après l'application. **Nettoyage des outils:** à l'eau et au savon. **Conservation:** dans un bidon bien fermé, même après usage, à une température supérieure à +10°C et inférieure à +30°C. **Stabilité:** 2 ans environ dans des bidons bien fermés, jamais ouverts.

**CONSIGNES DE SÉCURITÉ PARTICULIÈRES:** Éviter le contact direct avec la peau. Protéger les yeux et le visage. En cas de contact, rincer immédiatement et abondamment à l'eau et consulter un médecin. Les outils ne doivent pas être nettoyés dans des cours d'eau, des égouts, etc. **CONSEILS UTILES POUR L'UTILISATEUR:** Les renseignements fournis, d'après les résultats de nos expériences, sont précis et exacts. Les conditions d'utilisation échappant toutefois à notre contrôle, nous déclinons toute responsabilité quant aux avis et aux conseils fournis. Nous conseillons d'effectuer un essai d'application complet sur une petite surface pour s'assurer de la réussite finale. Procéder ensuite à la décoration en gardant constamment sous contrôle les effets décoratifs obtenus. Les teintes peuvent varier, par rapport au catalogue, de 20 à 30% tout comme d'ailleurs d'un peintre à l'autre, nous conseillons par conséquent d'effectuer un essai sur une petite surface avant d'exécuter les travaux. Le travail doit être effectué du début à la fin par la même personne. Le fabricant et le distributeur déclinent toute responsabilité en cas de différence entre un lot et l'autre ou en cas d'illisibilité de leur étiquette. Au cas où ces lots seraient différents et pour éviter des différences de couleur une fois l'application terminée, mélanger le tout dans un grand bidon avant de commencer à peindre.

Pour obtenir de meilleurs résultats et une pose rapide avec ARTECO 7, il est recommandé d'utiliser le pinceau PV 76 et la spatule spéciale en plastique PV 77.

**IMPORTANT: ARTECO' 7 peut être appliqué à la chaux, mais bien assainonnée et sec.**